

TRAFFIC CONTROL SYMBOL LEGEND

CLASS 1 BARRICADES

TRAFFIC DRUM

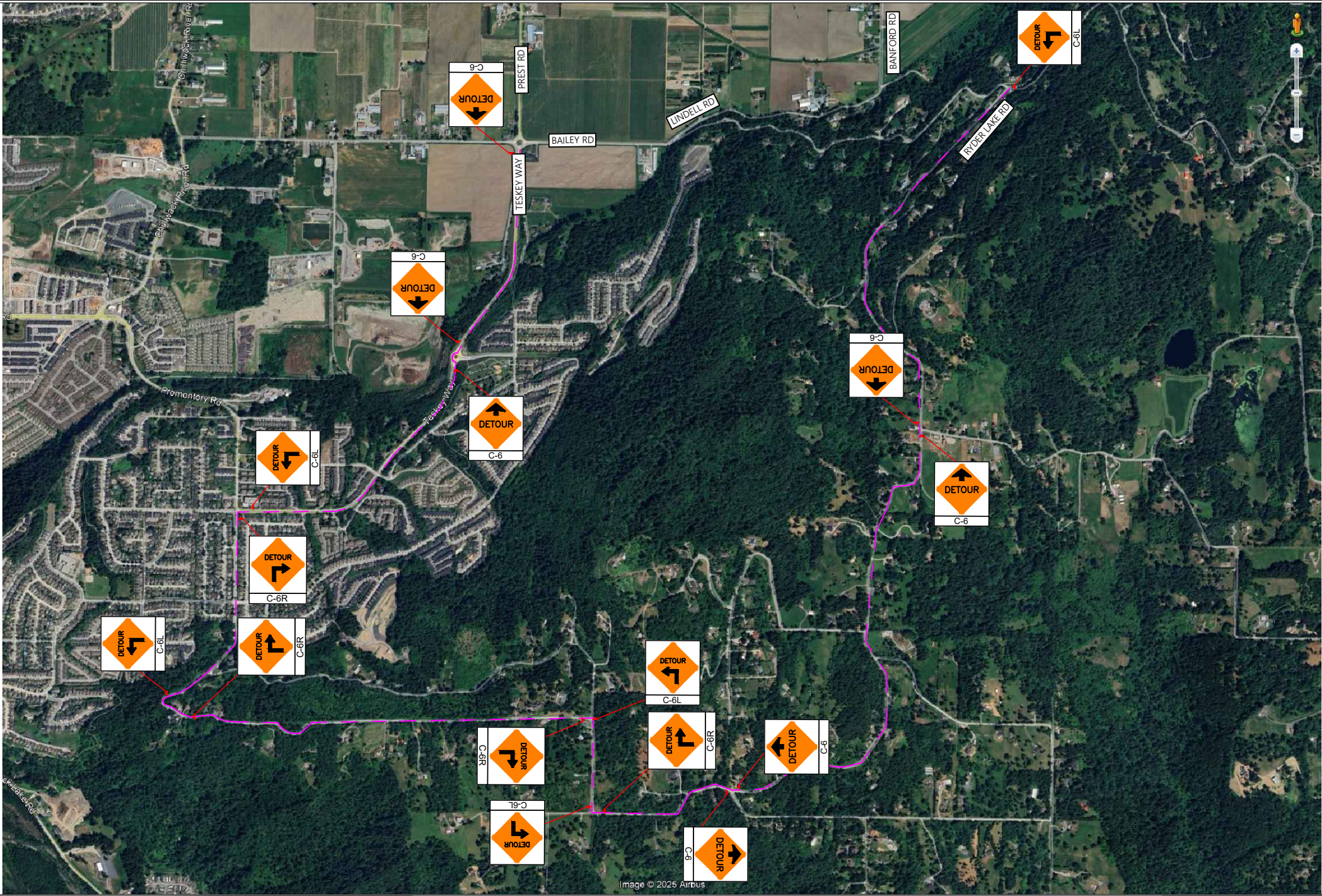
TRAFFIC SIGNAGE

CLOSURE AREA

TRAFFIC CONTROL PERSONNEL

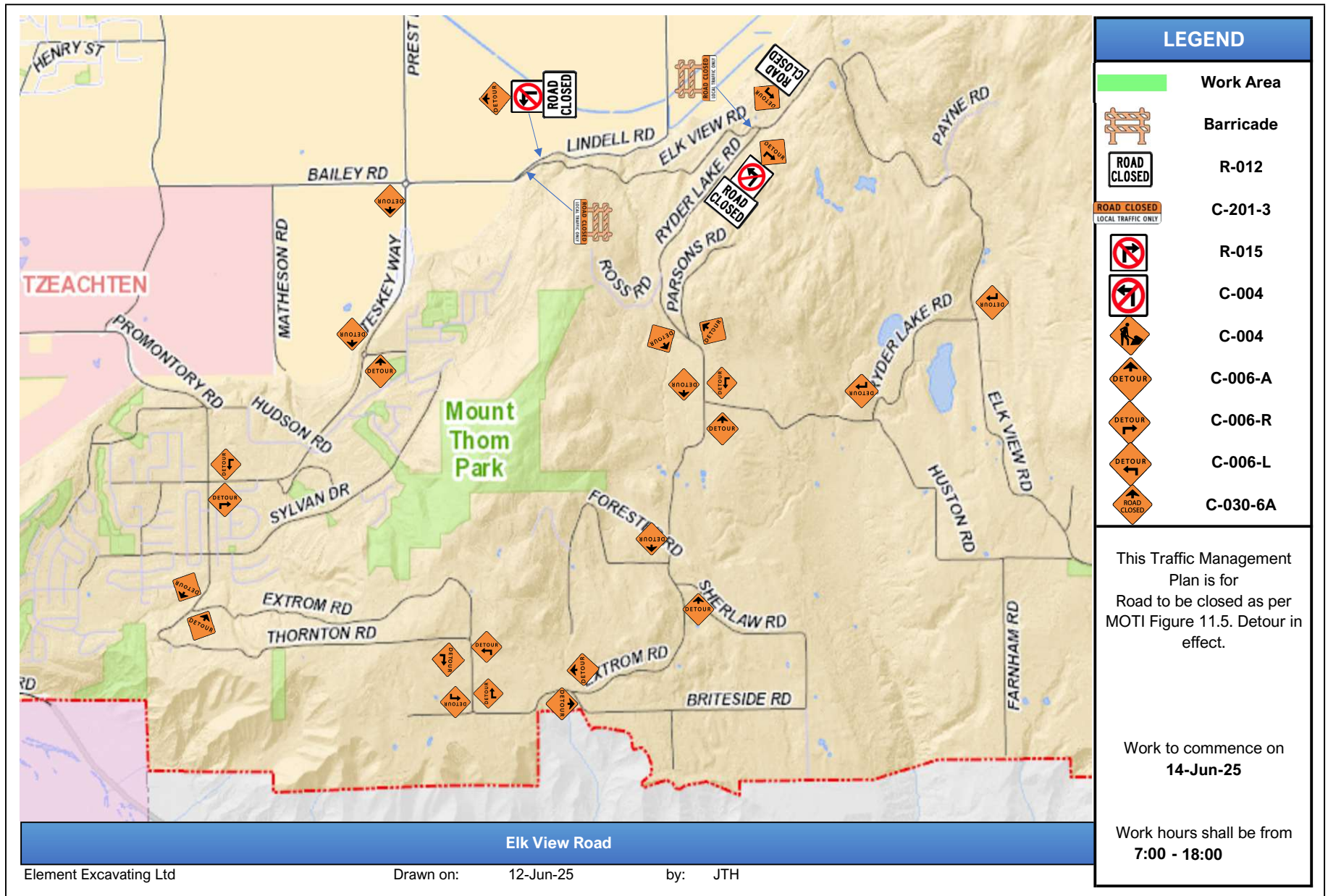
BUS STOP

PARKING REMOVAL



GENERAL INFORMATION
TUBULAR MARKING SEPARATION 10 (MAX)
BARREL SEPARATION - NA
MINIMUM LANE WIDTH - 3.2m
EXISTING POSTED SPEED - 50km/h
CONSTRUCTION POSTED SPEED - 50km/h
DESIGN VEHICLE - WB-20

GENERAL NOTES		REV	DESCRIPTION	DATE	INITIAL	ALL ROADS CONSTRUCTION		DWG No.	06A - Detour Route for Road Closure on Elkview Road	
<div><div><div>1. Hours of operation: 7:30am-7:30pm</div><div>2. Traffic Plan based on a 50km/h speed zone</div><div>3. Traffic specifications based on the MOTI Traffic Management Manual for Work on Roadways (2020)</div><div>4. Existing laning alignment to be reinstated at the end of each shift</div><div>5. Any signs that conflict with approved traffic plan will be covered or removed</div><div>6. Completion of Civil works</div><div>7. Onsite Contact: TBD</div><div>8. TCP's to utilize radios when site lines cannot be made</div><div>9. CMBC to be contacted prior to work commencing</div></div><div><div>10. Contractor & TCP's to follow WSBC Part 18 regulation</div></div></div>		0	ISSUED FOR INFORMATION	05.23.25	AME	PROJECT:	ELKVIEW RD, CHILLIWACK, B.C.	SCALE:		
						CLIENT:		2191 GREYLYNN CRESCENT, NORTH VANCOUVER, B.C.	KOPER & COMPANY TRAFFIC SERVICES	



LEGEND

Work Area



Barricade



R-012



C-201-3



R-015



C-004



C-004



C-006-A



C-006-R



C-006-L



C-030-6A

This Traffic Management Plan is for Road to be closed as per MOTI Figure 11.5. Detour in effect.

Work to commence on
14-Jun-25

Work hours shall be from
7:00 - 18:00

